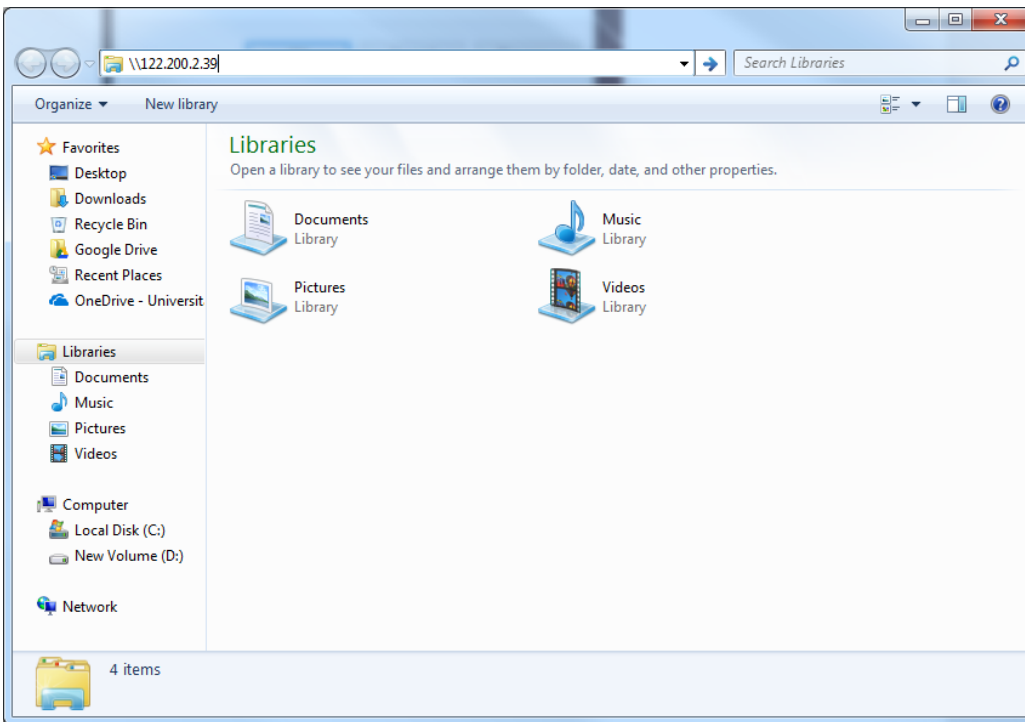


# PANDUAN INSTALASI SOFTWARE PRINTER

Panduan ini dapat diikuti ketika proses instalasi printer pada “Panduan Instalasi Printer” tidak berhasil. Setelah mengikuti panduan ini, Bapak/Ibu dapat mengikuti kembali “Panduan Instalasi Printer”.

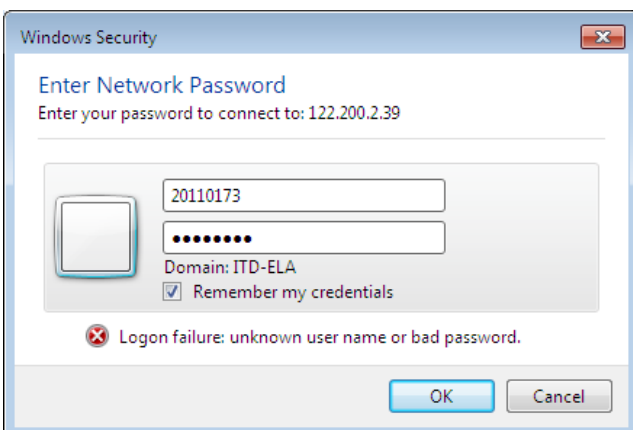
## INSTALASI SOFTWARE PRINTER

1. Ketik **\\122.200.2.39** pada kotak window My Computer.

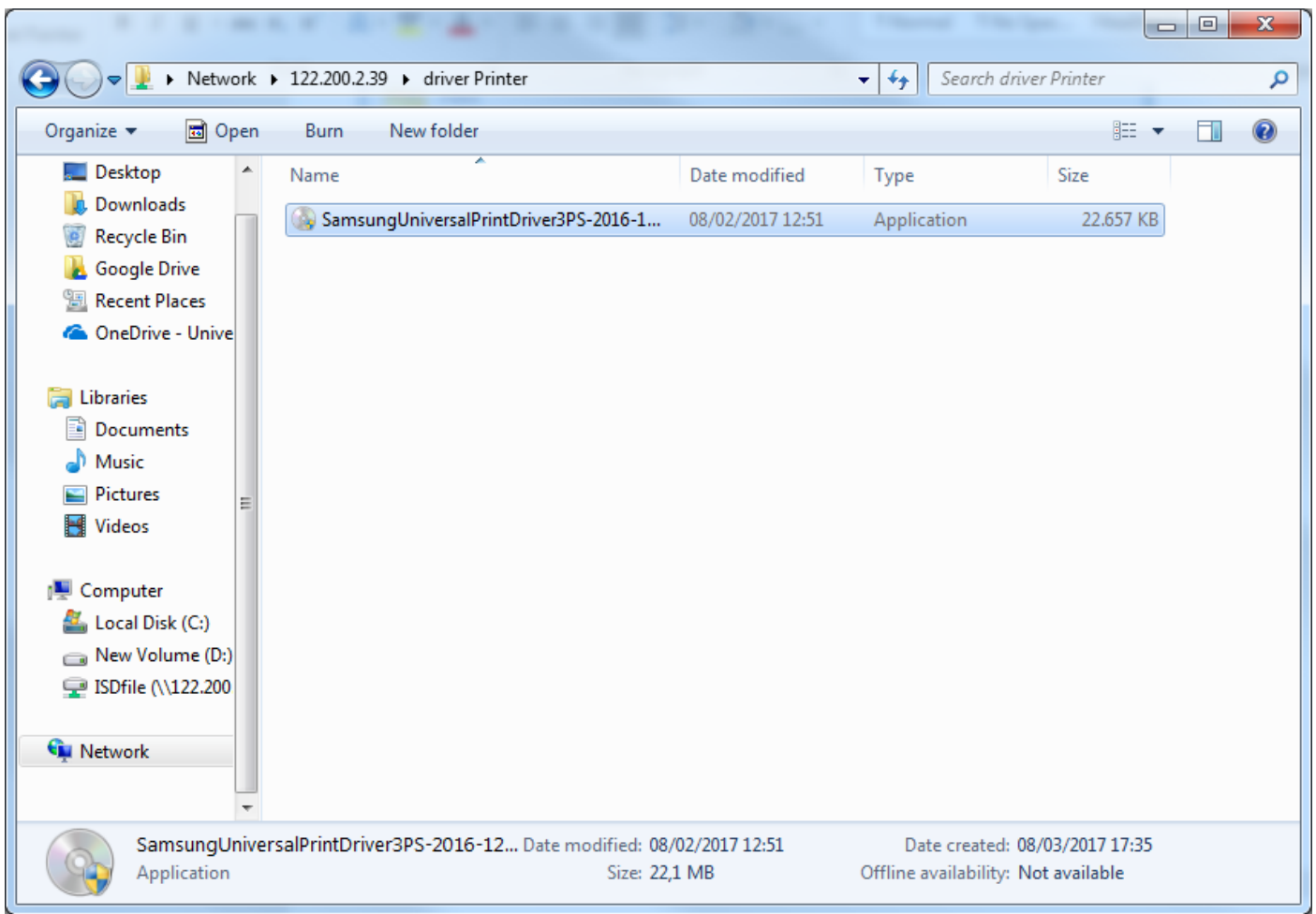


2. Masukkan username dan password berikut:  
Username : (NIK)  
Password : (8 digit Tanggal Lahir/DDMMYYYY)

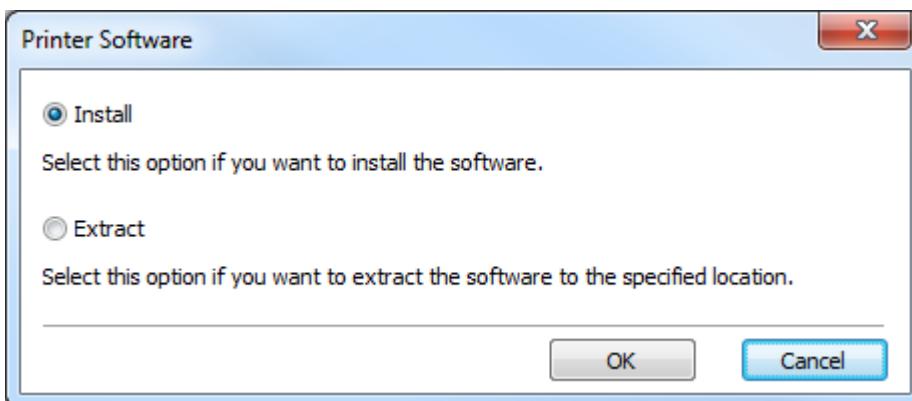
**\*Centang tanda “Remember my credentials”**



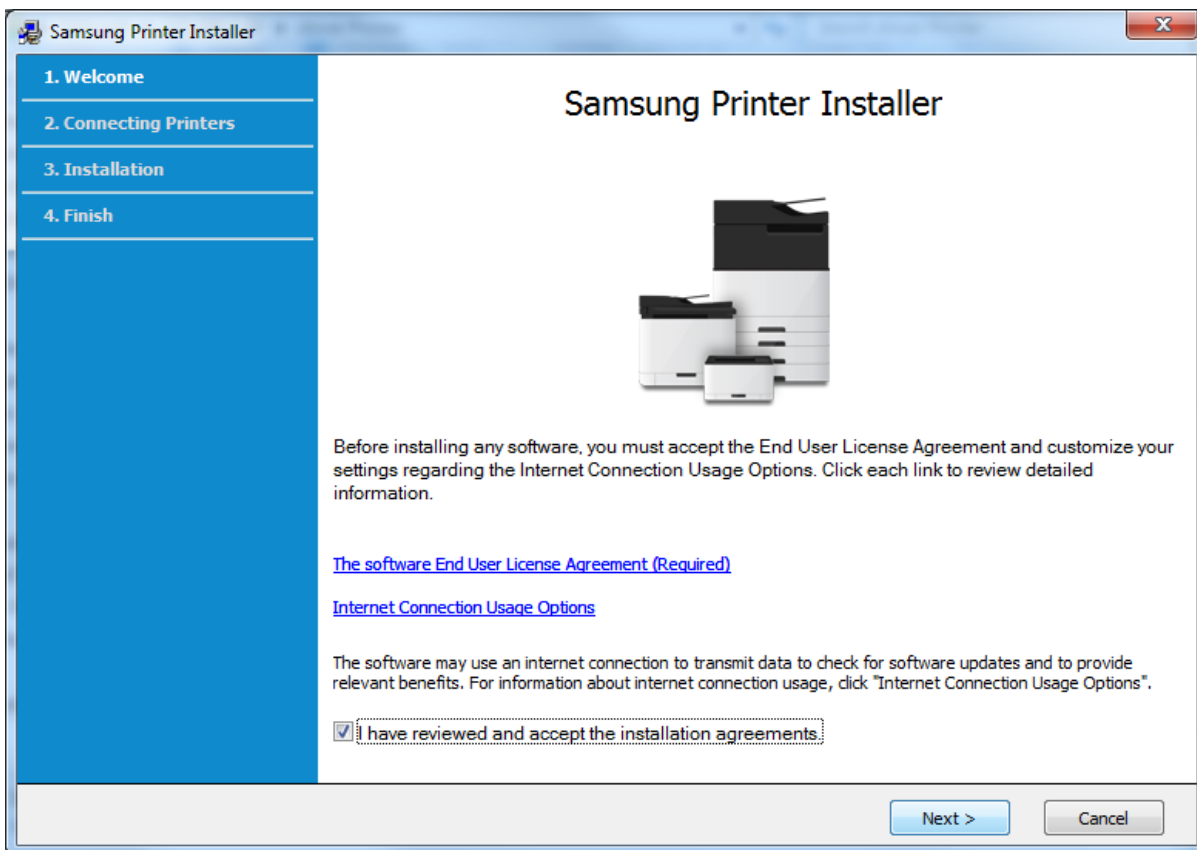
3. Buka folder “**Driver Printer**”, lalu klik dua kali pada file “**Samsung Universal Print Driver**”.



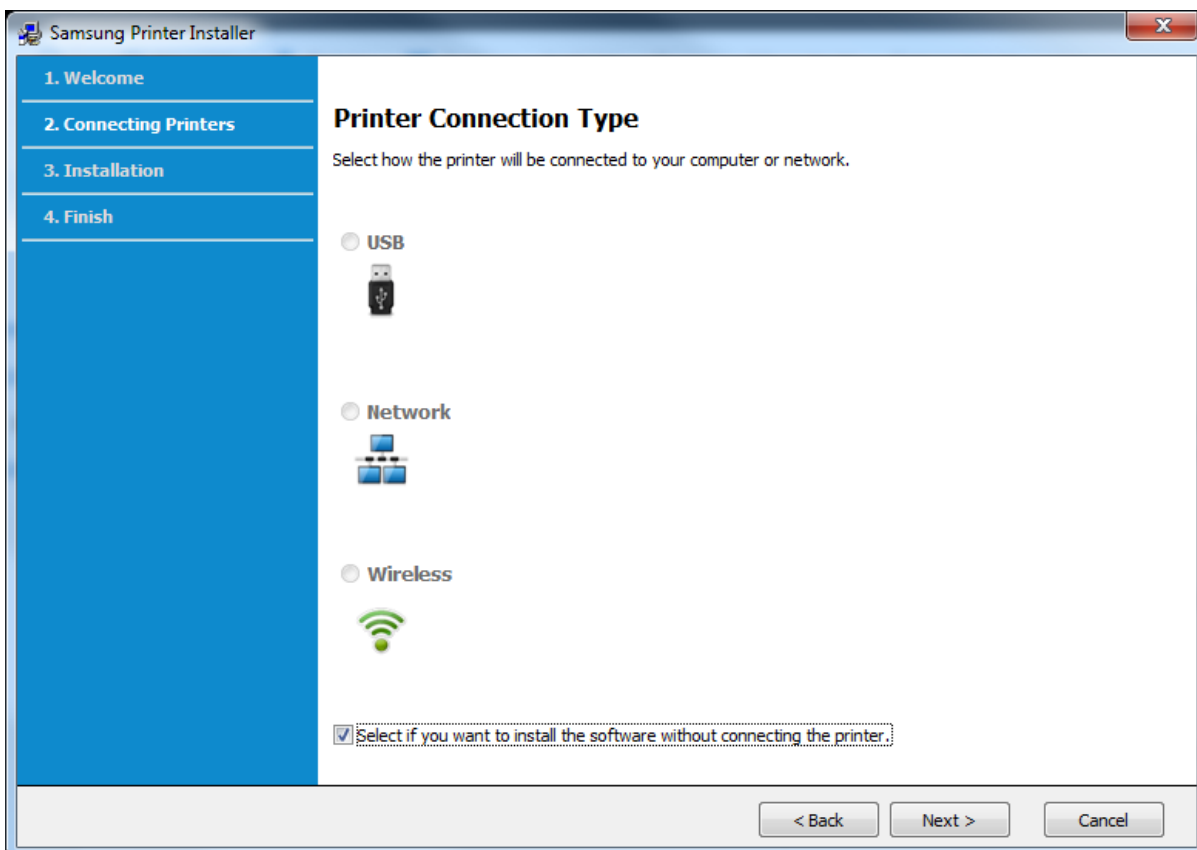
4. Pilih **Install**, lalu klik **OK**.



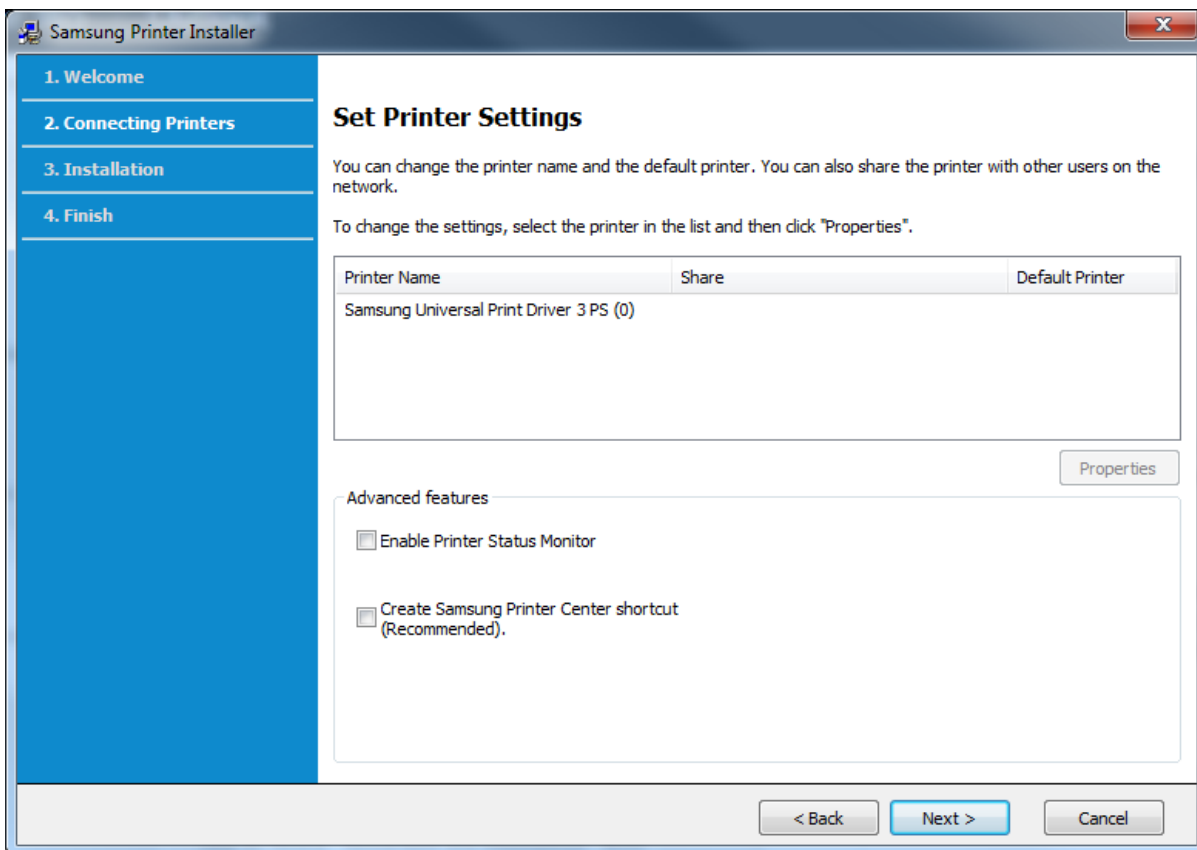
5. **Centang** "I have reviewed and accept...", lalu klik **Next**.



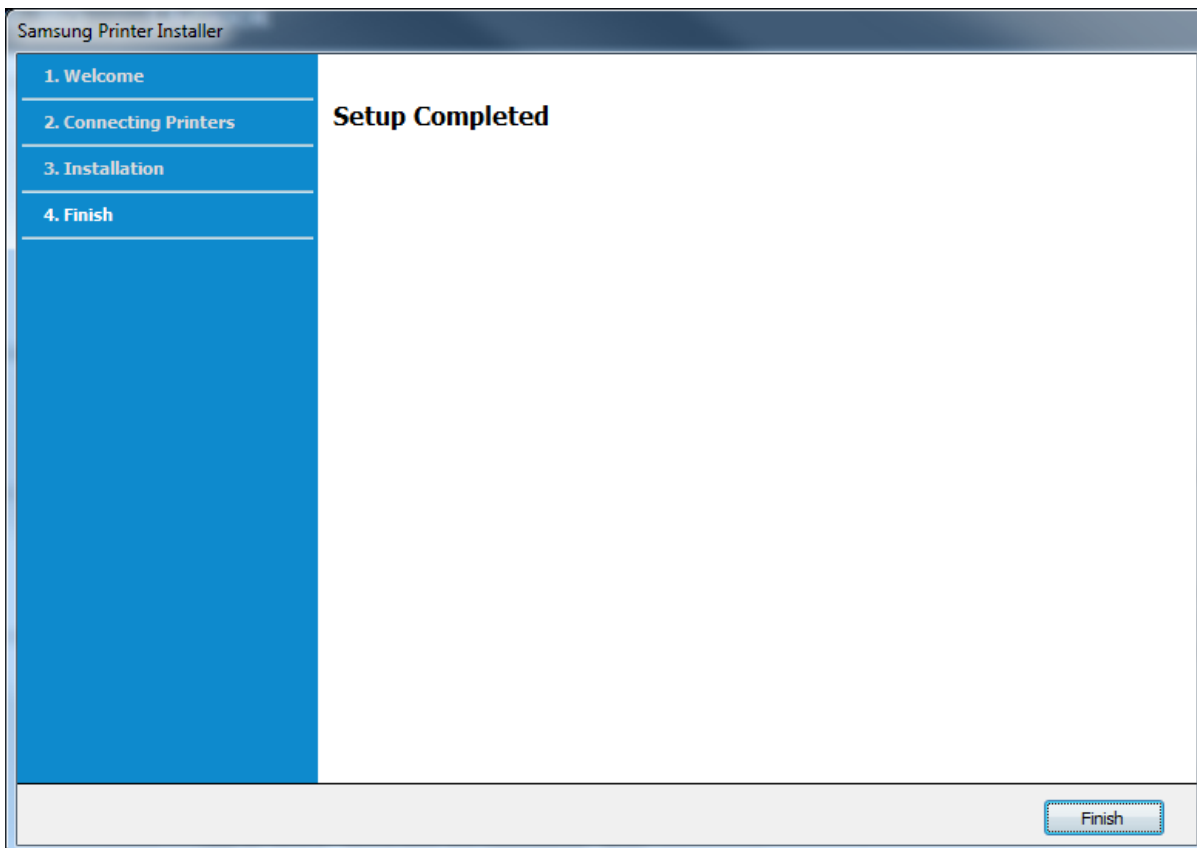
6. **Centang** "Select if you want to install the software...", lalu klik **Next**.



7. Klik **Next**.



8. Silahkan tunggu proses instalasi hingga selesai, lalu klik **Finish**.



9. Setelah selesai, Bapak/Ibu dapat mengikuti "Panduan Instalasi Printer".